



GENOX RECYCLING TECH (CHINA) CO., LTD.

#11 of No.3 Guangzhu road, Dongchong, Nansha, Guangzhou, China

Tel. +86 20 66851345 #810 Fax. +86 20 66851347

e-mail. info@genoxtech.com

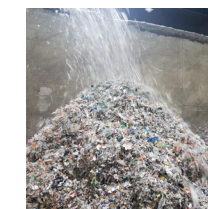
We reserve the right to make technical changes without prior announcement. All rights reserved.

©2019 GENOX RECYCLING TECH (CHINA) CO., LTD.



Industrial Solid Waste Recycling System

Application: Municipal Solid Waste, Bulky Waste, Production Waste, Mixed Waste



www.genoxtech.com



Industrial Solid Waste Recycling System



Features

- ① Heavy duty, hinge belt conveyor is suitable for high loading and materials impact whilst being sealed to prevent leakage of material.
- ② The high torque Pre-Shredder is equipped with large-diameter splined shafts, high-strength shredding discs, and oversized gearboxes to ensure system performance and reliability.
- ③ In the next step, an over-belt magnet is used to securely extract ferromagnetic parts such as scrap iron and other ferrous scrap metal. Ferrous scrap metal in premium solid recovered fuels is said to spoil its quality. Once separated, it can be recycled.
- ④ The system is equipped with a Trommel screen to screen out materials that have a great impact on equipment such as sediment and stone, etc. It is possible to extract different fractions in this process stage, such as fine particles and oversized fractions to obtain high-quality, medium-particle premium SRF/RDF.
- ⑤ In the near-to-final stage of the process, the material is shredded a second time in a process called fine shredding. Light fractions are fed into one or more secondary shredders depending on the system's throughput capacity.
- ⑥ A central Reverse Jet Filtration System extracts dust from the entire system.
- ⑦ System automation ensures that the component's actions are linked, the system capacity is maximized, and the system is protected against interfering material in the best way.



Steel Hinged Belt Conveyor



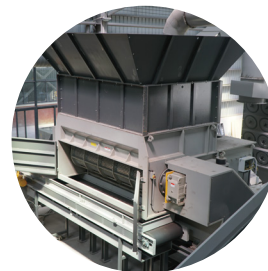
Pre-Shredding



Magnetic Separation



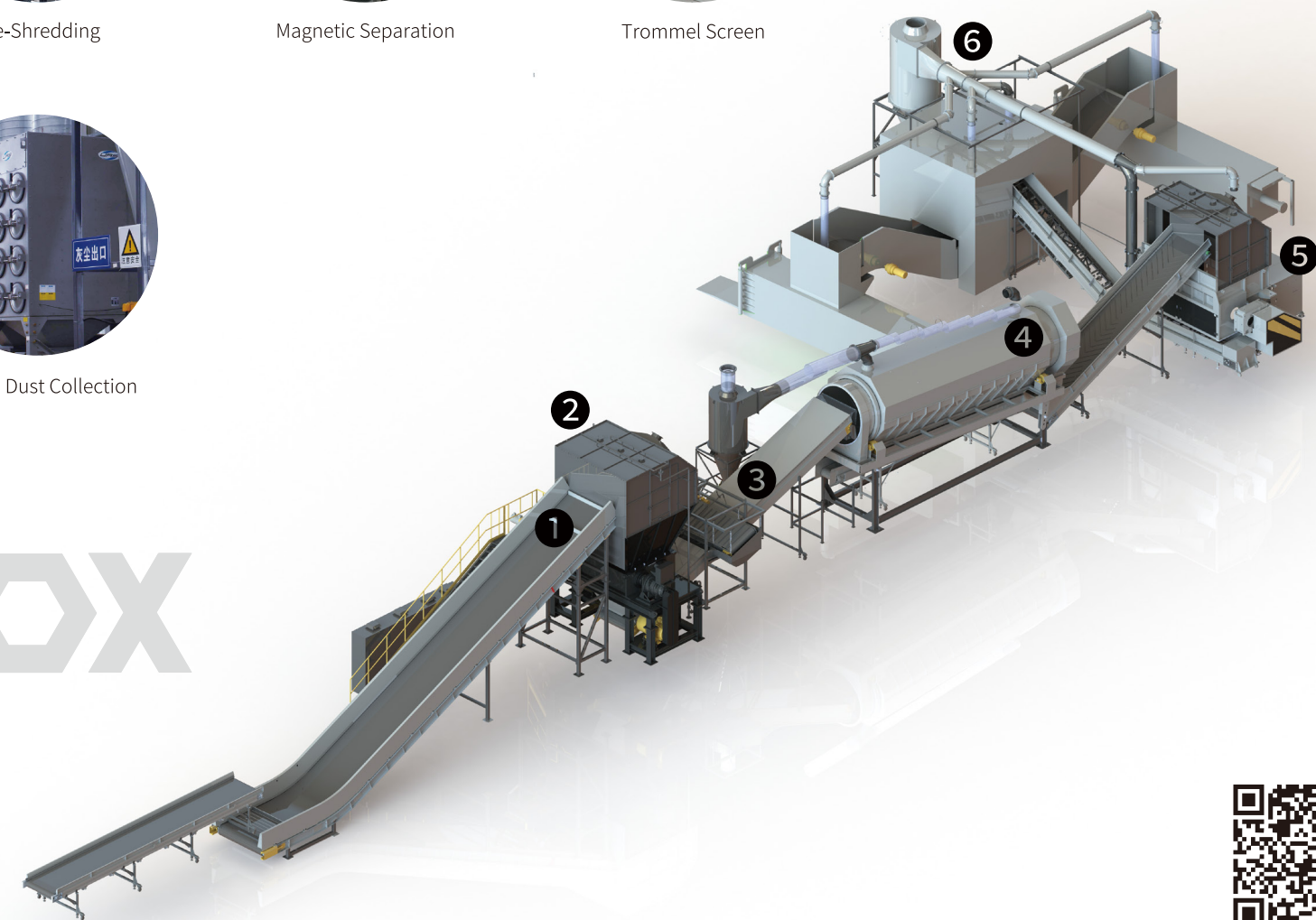
Trommel Screen



Fine Shredding



Central Dust Collection



more info